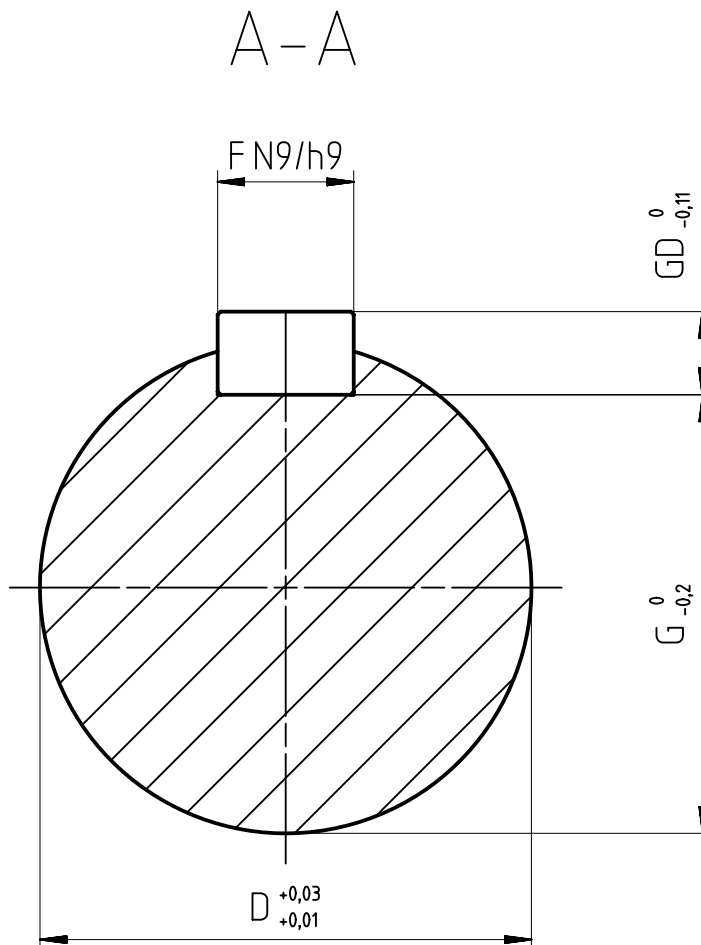


型号	F	D	GD	G	EB	E	B	BB	K'	L	✱L
1MT0003-3AA0	18	65	11	58	100	140	406	546	4x Ø 28(+0.052) <sub>0</sub>	1280	1340
1MT0003-3AA2							457	648	6x Ø 28(+0.052) <sub>0</sub>	1440	1500
1MT0003-3AA5							508				
1MT0003-3AA6											
1MT0003-3AA7											
1MT0003-3AB0	22	80	14	71	130	170	406	546	4x Ø 28(+0.052) <sub>0</sub>	1310	1370
1MT0003-3AB2							457	648	6x Ø 28(+0.052) <sub>0</sub>	1470	1530
1MT0003-3AB5							508				
1MT0003-3AB6											
1MT0003-3AB7							406	546	4x Ø 28(+0.052) <sub>0</sub>	1310	1370
1MT0003-3AC0							457	648	6x Ø 28(+0.052) <sub>0</sub>	1470	1530
1MT0003-3AC2							508				
1MT0003-3AC5											
1MT0003-3AC6							406	546	4x Ø 28(+0.052) <sub>0</sub>	1310	1370
1MT0003-3AD0							457	648	6x Ø 28(+0.052) <sub>0</sub>	1470	1530
1MT0003-3AD2							508				
1MT0003-3AD5											
1MT0003-3AD6							406	546	4x Ø 28(+0.052) <sub>0</sub>	1310	1370
1MT0003-3AE0							457	648	6x Ø 28(+0.052) <sub>0</sub>	1470	1530
1MT0003-3AE2							508				
1MT0003-3AE5											
1MT0003-3AE6											



\* 当选用驱动端向下的安装方式时，电机标配防雨罩，此时不可同时选用第二轴伸(选件号L05)。  
If the motor is installed vertically with drive-end downward, fan cover will be equipped with protection cover as standard, and the second shaft extension (option code L05) is not allowed.

Tolerance	Surface	Material	Weight	Scale
			0	
				mm
1MT0003-3A Ex db IIB T4 Gb 外形安装尺寸图 1MT0003-3A IM B35 Ex db IIB T4 Gb	Author	BI		
	Creator	2023-01-31 Gan, Chao		
	Approval	2023-02-03 Zibo		
	Department	PD LD P&BD 2 YIZ NP		
	Charge Order	P5A00434844		
©INNOMOTICS 2024	Doc. State	Released		
	Revision (Number)	006		
	Project No	2		
	Ref. No	ASE48323038A		
	Sheet	1 of 1		
DIMENSION SHEET 1MT0003-3A IM B35 Ex db IIB T4 Gb		Product	MLPB(Product-0)	Doc. Type TB / Z
		Item No		Paper Size A1
		Doc. No		1st Language en
		2nd Language de		Sheet 1 of 1